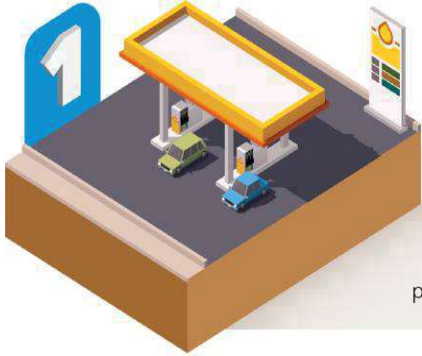


# Bessemer City

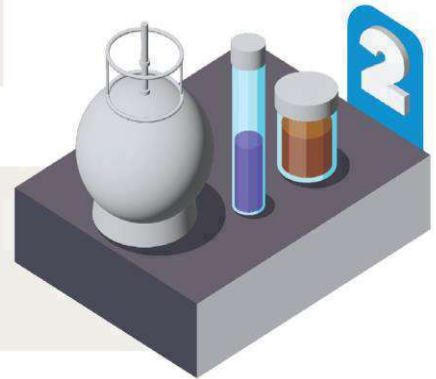
## Brownfields Assessment Grant Process

Through this grant the City will be able to perform steps 1, 2 & 3 in the City's Target Area



### Phase I Site Assessments

Gather information on the property's previous and current use. Perform a visual inspection to identify any possible contamination or concerns to the local environment.



### Phase II Site Assessments

Obtain samples from the property to determine if there is contamination and to what degree.



### Site Investigations

A deeper dive into the data gathered from the Phase II ESA to help determine next steps.



### Site Remediation

Removal of the contamination at the property ensuring the proposed reuse is suitable for human health.



### Redevelopment

Revitalization of the property for a new reuse that benefits the community.